

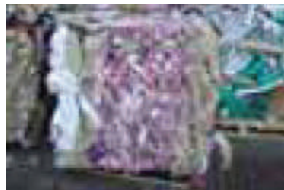
# Masterburn

## ON SITE INCINERATION



The **MB350** is an Incinerator specifically designed to suit the needs of the medium sized poultry farmer, sheep farmer or dairy unit with large calf numbers and increasingly pet cremations. This versatile machine was recently designed due to demand from these applications

With the added advantage of virtually no smoke or smell problems the compact design of this model ensures space saving technology as well as offering a cost effective method for the disposal of your waste. The design of this model ensures extra air is drawn into the main chamber aiding primary combustion to ensure the efficient disposal of carcasses at minimum.



### FEATURES

- **DEFRA & DARD Type Approved**
- **5mm Steel Construction**
- **25mm High Density Insulation**
- **75mm High Quality Refractory Lining**
- **Designed for Outdoor Use**
- **IP68 Rated**
- **Factory Wired**
- **Factory Installed Pipework**
- **Factory Test Fired**
- **10 M Pipe For On Site Install**
- **2 Stage Burners**
- **Individual Chamber Temperature Control**
- **Pre Incineration Warm Up Cycle**
- **Post Incineration Cool Down Cycle**
- **Variable Time Control**
- **24hr Burner Exchange Service**



## Model No: **MB350**

Model No.	MB350
Fuel Type	Oil
Cubic Capacity (Mtr)	0.46
Door Aperture (mm)	1100m x 550
EXTERNAL DIMENSIONS	
Length (mm)	2300
Width (mm)	1500
Height incl. Flue (mm)	3300
INTERNAL DIMENSIONS	
Length (mm)	1300
Width (mm)	559
Height (mm)	650
FUEL CONSUMPTION (GUIDE ONLY)	
Gallons / hour	1.5
MINIMUM OPERATING TEMPERATURE	
Degrees Centigrade	950
RESIDENCY TIME IN AFTERBURNER CHAMBER	
Seconds	2
Temperature Monitoring	YES

# INCINERATE UK LIMITED

Moss Side Farm  
New Lane  
Crossens  
SOUTHPORT  
PR9 8LN

01704 224756